

FACADE

Decorated Cornice

Specification and installation guide



Specification

Benefits VMZINC decorated cornice is the unique offer of bespoke ornamented cornice panels. The unlimited decoration possibilities inspire the world of restoration and the world of new materialization and visualization. The option range for decoration offers possibilities in perforations, formats, patterns, aspects from classical to high tech design. Thanks to the VMZINC cassettes support, VMZINC decorated cornice is easy and fast to install. VMZINC Decorated Corniche's unique offer and our dedicated team helps you to realize your creation.

- Applications**
- Bespoke design – made to order or reproduction.
 - Light weight prefabricated panels for light structure and easy installation.
 - Can be produced in all VMZINC aspect, copper or post laquering (RAL).
 - Fixed on tested and approved rainscreen system.

 - Refurbishment or new buildings.
 - Unlimited architectural decoration possibilities such as:
 - classic greek/roman
 - gothic
 - renaissance
 - baroque
 - rococo
 - Art Nouveau
 - Modern architecture
 - Art Deco
 - Postmodern
 - ...



Surface finishes

Natural zinc and copper Natural VMZINC has a shiny metallic appearance when new and develops a patina over time. In facade applications, it may take 10 years for the matt grey patina to form. It can be quickly soldered without removing the patina.

Engraved zinc AZENGAR is the new surface finish from VMZINC which is the first engraved zinc giving a product with a matt, heterogeneous and light aspect. AZENGAR can be used in the same fashion as other VMZINC products for roofs, facades and ornaments.

Pre-weathered QUARTZ-ZINC offers an appearance and texture that does not change over time. When QUARTZ-ZINC is scratched, it will self heal. The grey tones of QUARTZ-ZINC blend well with existing construction materials – ideal for refurbishment. ANTHRA-ZINC with its visible grain matches the colour of slate and blends well in combination with photovoltaic panels.

PIGMENTO finishes offer a unique range of colours. This natural product enables the texture of the QUARTZ-ZINC to still be seen whilst offering the designer the choice of colour to complement other elements of a facade or roof. The colouration of the zinc is achieved with a special pigment layer that enhances the qualities of the zinc without presenting a block colour.

* Indicative RAL-reference matching the surface aspect of new preweathered zinc of VMZINC.

Lacquered VMZINC know-how in the treatment of surface aspects for more than 40 years enables to propose a brand new offer of customized colours.

Countless shades for VMZINC coated products can be asked for an exclusive building.

Lacquered zinc is treated by applying a paint system known as PVDF2 (Resin), which is more resilient in aggressive environments than any other coating.



RAL 9006*



RAL 7037*

RAL 7021*



RAL 7031*

RAL 7003*



RAL 8025*

RAL 8028*



RAL 9001

RAL 0403040



RAL 7022

RAL 9001



RAL 2007005

RAL 8014

VMZINC Decorated Cornice

Installation



1 The layout of the rails marked beforehand (laser or tracing line) must match the layout diagram drafted by the architect.



2 It is important to precisely align the bottom flashing to ensure that the cornice is completely straight.



3 Install the bottom cassette into the bottom flashing, further installation from left to right and from bottom to top.



4 The cassettes are delivered with the pre-mounted decoration and are, easily self-wedging to facilitate cassette interlocking and optimize installation speed.

VMZINC Decorated Cornice

Installation



5 The inner corner panel are mounted.



6 The cassettes are fastened to the Omega rail using the self-drilling screws.



7 Parapet flashing are interconnected thanks to an undercloak lap lock.



8 Parapet flashing are interconnected thanks to an undercloak lap lock.

VMZINC Decorated Cornice

Installation



For a neat and clean connection.



Decorated joint caps are available to hide panels and to offer vertical ornamentation.



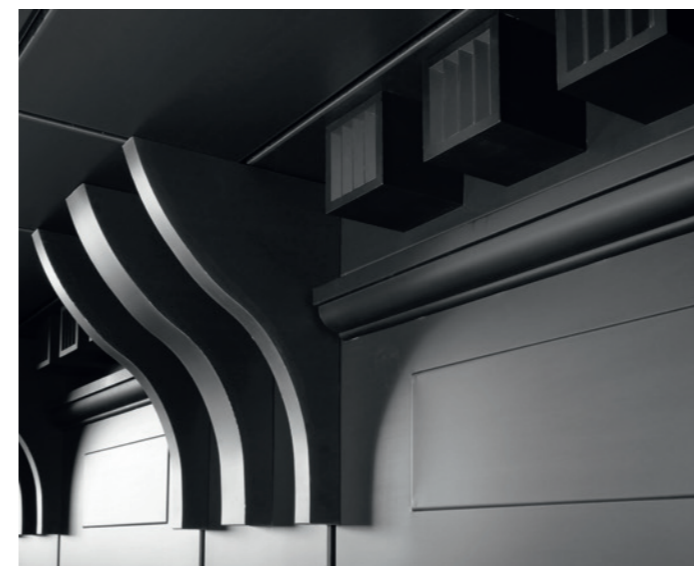
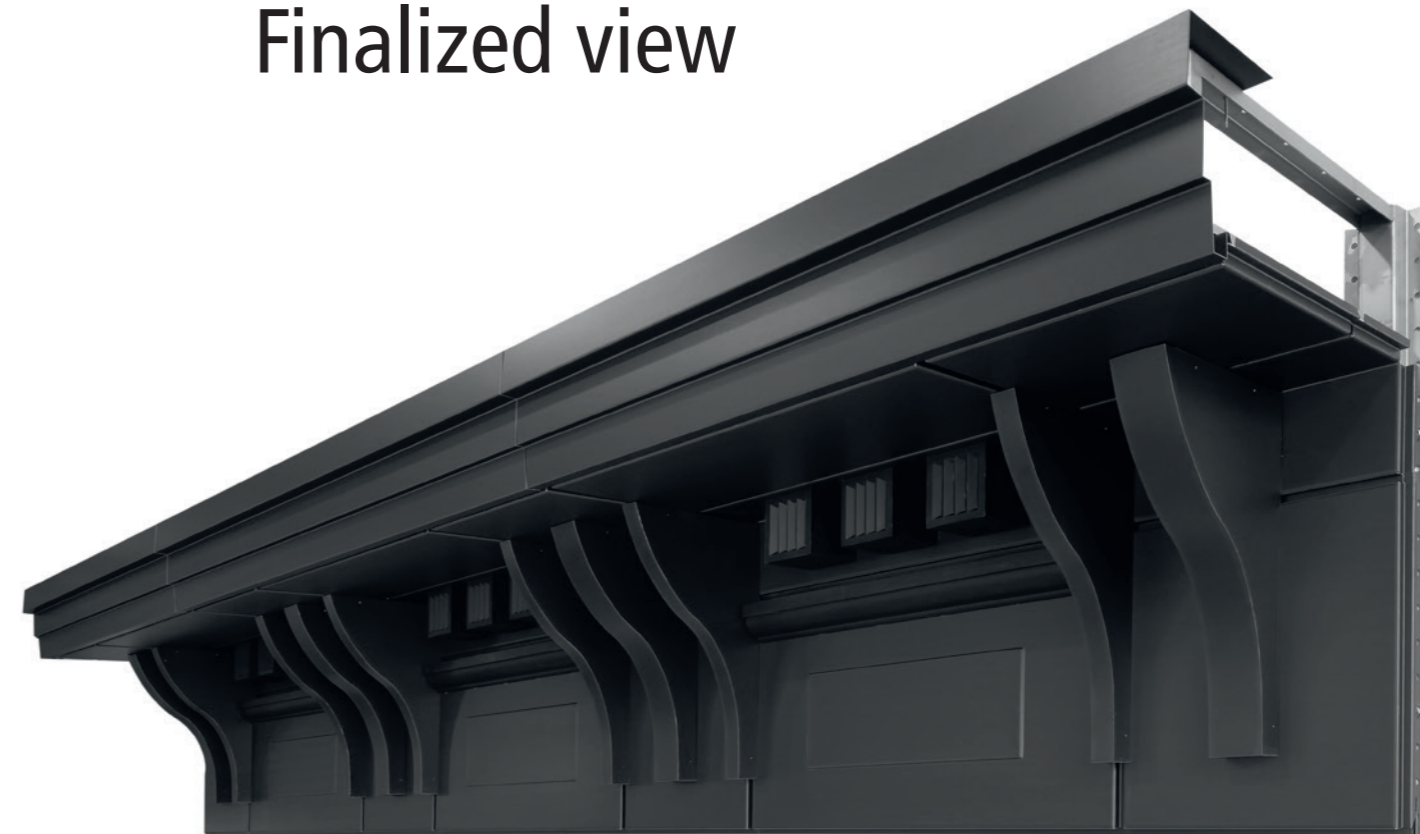
They are or can be, fixed with rivets.



Remove plastic film.

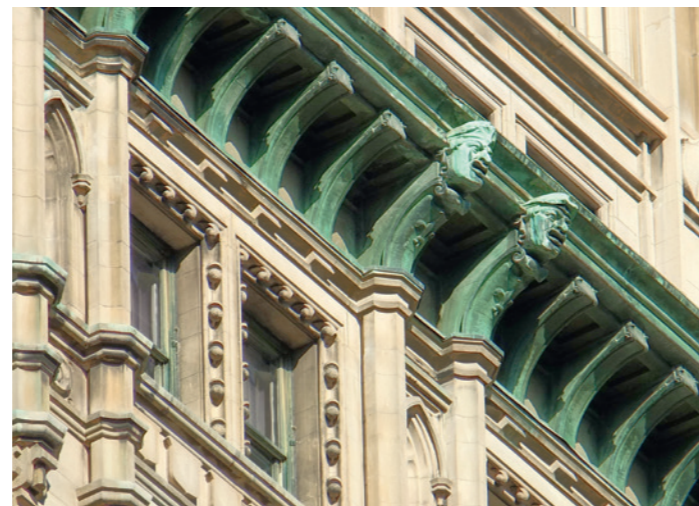
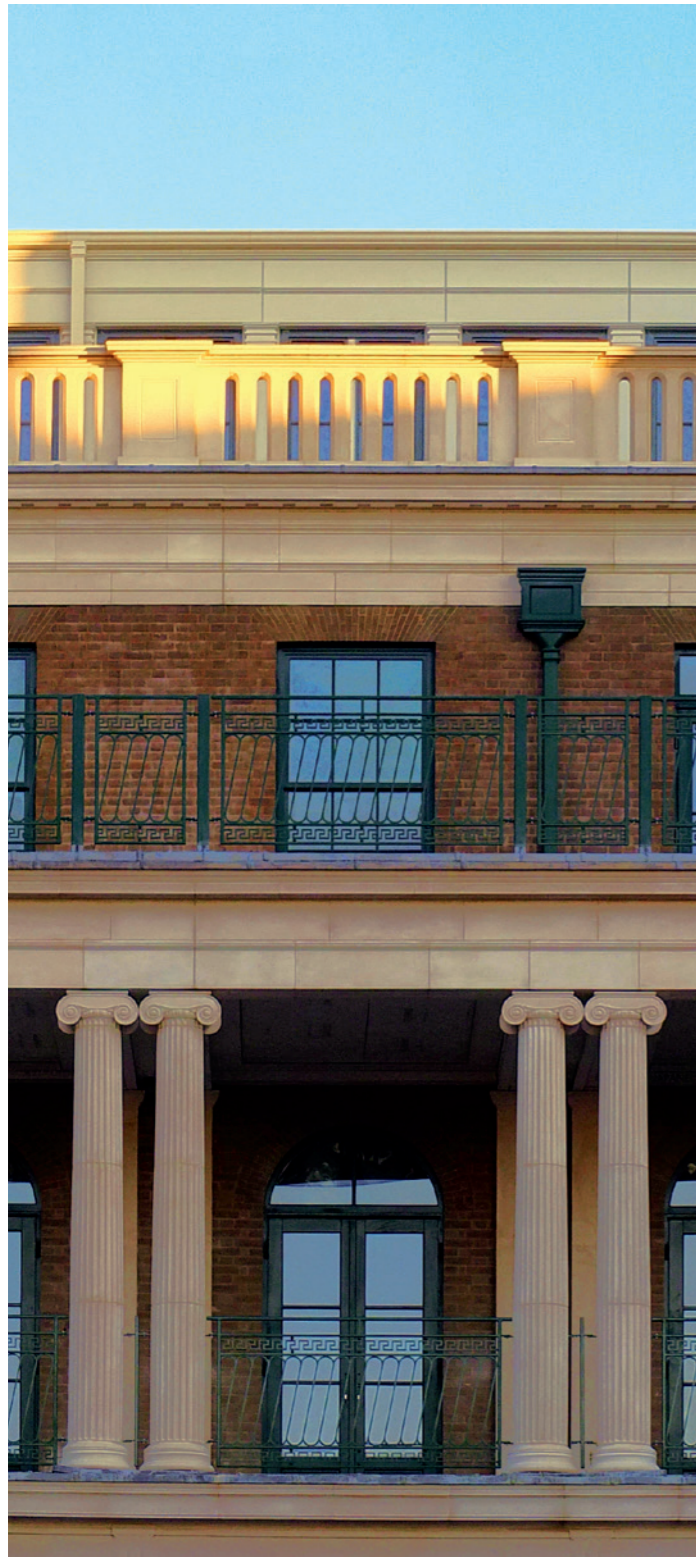
VMZINC Decorated Cornice

Finalized view



VMZINC Decorated Cornice

Field of application



VMZINC Decorated Cornice

Field of application



Services

Reproduction Our production and design assistance teams work from the original model or pictures or drawings when the roofing decoration no longer physically exists. Scans or 3D files, creations based on engravings, photographs or detailed sketches can be used to recreate ornaments. Our unique library of historical stamps has helped us several times to recreate some 19th century ornaments.

New creations Experience in ornamentation will help you to transform your idea into reality. A committed design team is dedicated to developing your creation into an ornament that will enhance the beauty of your project.

Design Decorations, creations and standard products are exclusively hand-made and all drawn to scale 1 before being produced. This process enables us to better reproduce details, achieve greater precision in assemblies and make perfectly consistent series. Drawings will be submitted for signature before production.



Services

Project management Our Team will guide you through the process from design to installation, All this with all the most accurate and efficient means at an international level. Please, contact us for commercial or technical support or to discuss your project.



Herman Temmerman
Ornaments & Façade Support Manager
Mobile: +32 (0)473 97 03 43
Herman.Temmerman@vmbuildingsolutions.com



Sammy BARON
Customer Support Manager
Ornaments & Façade applications VMZINC
Mobile: +32 (0)473 422 910
Sammy.Baron@vmbuildingsolutions.com



Subject

This document is intended for specifiers (architects and their teams who are in charge of designing buildings) and for users (companies in charge of installation on-site) of the designated product or system. It aims to give the main elements of information, texts or diagrams: presentation, area of use, description of components, installation (including installation supports) and flashing. Any use or specification outside of the indicated area of use and/or specifications of this guidebook implies specific consultation with VM Building Solutions technical services and this, without the responsibility of the latter being engaged as to the design or installation feasibility of these projects.

Area of application

This document applies to the installation of the designated product or system solely on sites located in the USA.

Qualifications and reference documents

We would remind you that the specification of comprehensive building solutions for a given building remain the exclusive competency of building project managers, who must make sure the use of the specified products is suited to the purpose of the building and compatible with the other products and techniques used.

Responsibility

Unless written agreement has been given by VM Building Solutions, the latter may not be held responsible for any damage resulting from a specification or installation that does not comply with all VM Building Solutions specifications, and with the abovementioned standards and practices.